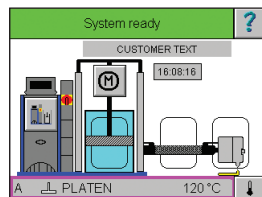


VersaDrum[®] Bulk Melters with Gear Pump

200-liter or 55-gallon drum melters

VersaDrum melters:

- Simplify installation and set-up
- Provide easy day-to-day operation
- Offer production flexibility
- Protect adhesive integrity



Graphical, touch-screen control system provides visibility and monitoring of all operations and status conditions

Single-side access for controls and drum changes



Variable speed motors with precision gear pumps including optional dual-stream and hardened versions

Pressure control valve for accurate, adjustable pressure and optional automatic pressure control systems

Manual or automatic aeration systems

Adjustable drum clamp for accurate positioning of metal or fiber drums

Nordson[®] VersaDrum bulk melters are designed for precise demanding hot melt adhesive application from 200-liter or 55-gallon drums. With a variety of pump types and sizes, VersaDrum gear pump melters are customizable to accommodate a wide variety of adhesives and meet specific manufacturing requirements.

A powerful industrial PC provides full control of the adhesive system via a touch-screen interface and displays messages, warnings, and indicators for every operator activity and machine status condition.

VersaDrum bulk melters only melt the top surface of adhesive allowing the remaining material in the drum to stay solid to reduce thermal stress and protect bonding characteristics. Particularly well-suited for reactive adhesives, such as moisture-cure polyurethanes, the hydraulic passages are designed to eliminate dead spaces where undesired curing could result.

For applications that require continuous operation, Nordson's automatic changeover system links two bulk melters together to eliminate the downtime associated with drum changes.

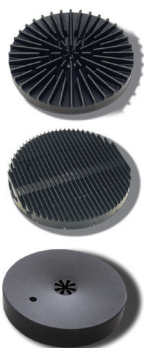


VersaDrum® Bulk Melters with Gear Pump

200-liter or 55-gallon drum melters



Six additional temperature channels for control of spray guns, heaters, etc.



Modular, non-stick axial, finned and smooth melt platens for quick change and easy clean-up

Specifications

Type of System	Gear pumps with variable speed AC motors
Drum Diameter	571 mm (22.5 in) or 567 mm (22.3 in)
Maximum Pump Rate¹	270 kg/hr (595 lb/hr)
Number of Hoses/Applicators	2 standard (hydraulic & electrical) up to 6 additional (electrical only)
Maximum Working Hydraulic Pressure	85 bar (1233 psi)
Operating Temperature Range	40 to 230°C (100 to 450°F)
Ambient Temperature Range	-5 to 40°C (23 to 100°F)
Temperature Control Stability	±1°C (2°F)
Temperature Sensor	Ni 120 (or PT-100 optional)
Electrical Service²	200 VAC 3 phase delta 50/60 Hz 240 VAC 3 phase delta 50/60 Hz 400 VAC 3 phase Y 50/60 Hz 400 VAC 3 phase delta 50/60 Hz 480 VAC 3 phase delta 50/60 Hz 575 VAC 3 phase delta 50/60 Hz
Maximum System Power Capacity	39000 watts
Weight (empty)³	672 kg (1,482 lb)
Input/Output Capability Standard	6 Inputs 6 Outputs
Melter Dimensions (W x H x D)	1520 x 3010 x 740 mm (59.9 x 118.5 x 29.2 in)
Installation (service) Dimensions	2100 x 3010 x 1103 mm (82.7 x 118.5 x 43.5 in)
Protection	IP54

¹ Actual rates will vary depending on adhesive type, application parameters and input voltage.

² Permitted deviation from rated line voltage is ±10%.

³ Weight depends on melter configuration.

For more information, speak with your Nordson representative or contact your Nordson regional office.

United States

Duluth, Georgia
(800) 683-2314 Phone
(866) 667-3329 Fax

Canada

Markham, Ontario
(800) 463-3200 Phone
(905) 475-8821 Fax

Europe

Erkrath, Germany
(49) 211-9205-0 Phone
(49) 211-254658 Fax

Japan

Tokyo, Japan
(81) 3-5762-2700 Phone
(81) 3-5762-2701 Fax

Asia/Australia/

Latin America

Amherst, Ohio
(440) 985-4797 Phone
(440) 985-1096 Fax

Find us on:

